

"CERF has grown to become one of the largest and most reliable sources of humanitarian funding."

Ban Ki-Moon
United Nations Secretary-General

Q4 2013 SUMMARY

Towards the end of the fourth quarter, CERF and its humanitarian partners were challenged by a series of large, complex crises, including three system-wide level-three (L3) emergencies. These crises, in countries including the Central African Republic (CAR), the Philippines, Syria and Yemen, have affected 35 million people who urgently needed emergency relief, protection and basic services. CERF was there to provide a lifeline.

Thanks to the donor community's continued generosity, the Emergency Relief Coordinator (ERC) was able to allocate US\$125.4 million from CERF in the fourth quarter, bringing CERF's total allocations for 2013 to \$482 million. CERF helped humanitarian partners to kick-start critical operations following sudden-onset emergencies, respond rapidly to deteriorating conditions in existing emergencies, and maintain relief work in countries where life-saving activities are severely underfunded.

In December, donors reaffirmed their trust in CERF at the annual CERF High-Level Conference by pledging \$404.6 million for 2014. This is an increase of 5.5 per cent compared to last year.

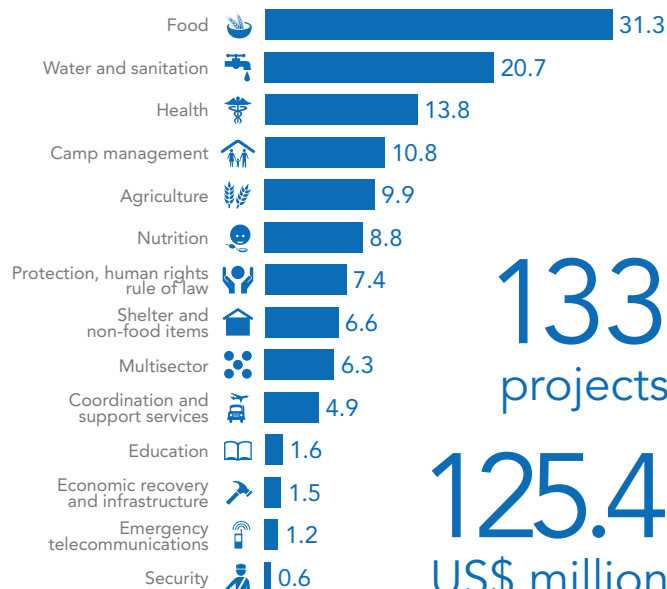
TOP ALLOCATIONS 4TH QUARTER 2013 (US\$ MILLION)

\$25.3 to the Philippines in response to Typhoon Haiyan (11 November).

\$9.8 to the Central African Republic in response to recent increase in violence (13 December).

\$8.0 to Malawi (4 November) in response to severe food insecurity.

Q4 2013 CERF projects approved, by sector (in \$US million)



4TH QUARTER 2013 CONTRIBUTIONS

Contributions received in Q4
For 2013 and 2014, Oct-Dec 2013

163.5
US\$ million

Total contributions received for 2013
As of 31 January 2014

473.7
US\$ million

Pledges received in Q4
For 2013 and 2014, Oct-Dec 2013

409.5
US\$ million

Q4 RAPID RESPONSE ALLOCATIONS

The ERC allocated \$94.4 million through CERF's rapid response window in the fourth quarter of 2013. These funds helped humanitarian partners kick-start critical relief work in 12 countries.

The highest amount, \$25.3 million, was allocated to emergency response projects in the Philippines within days of Typhoon Haiyan (see timeline below). CERF allocations were provided to humanitarian agencies assisting people affected by conflict and displacement in CAR (\$9.8* million), Ethiopia (\$4.2 million), Guinea (\$1.1 million), Philippines (\$3 million) and Syria (\$20 million).

Other rapid response allocations granted in the fourth quarter included Bolivia (\$2.5 million), Ethiopia (\$1.5), Guinea (\$1 million), Kenya (\$1.5 million), Malawi (\$8 million), Niger (\$3 million), Philippines (\$5 million), Rwanda (\$2.4 million), Sudan (\$5.1 million) and Zimbabwe (\$2 million).

PHILIPPINES

In the early morning of 8 November 2013, category five Typhoon Haiyan cut a path through the Visayas region of the Philippines, devastating 41 provinces. It affected more than 14 million people, displaced 4 million people and killed more than 5,600 people.

Just three days later, the ERC announced a \$25.3 million CERF rapid response allocation: the first major injection of funds to support aid operations following the typhoon. The funding helped humanitarian partners to kick-start life-saving relief work, including the provision of food, clean water, health care and shelter for millions of people.

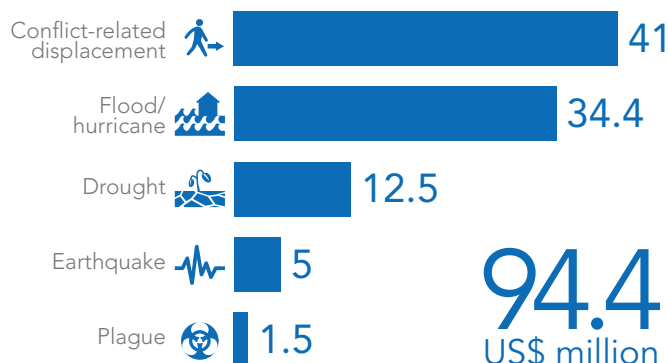
Two months after the storm, CERF funding still accounts for 8 per cent of the contributions to the \$791 million Typhoon Haiyan Action Plan.

Since 2006, CERF has allocated more than \$82 million to humanitarian activities in the Philippines - that includes \$68.7 million through the rapid response window and \$13.4 million through the underfunded emergencies window.

CENTRAL AFRICAN REPUBLIC

A violent crisis has been unfolding in CAR since March 2013, affecting the entire country. UN agencies estimate

Q4 rapid response allocations by emergency type (in \$US million)

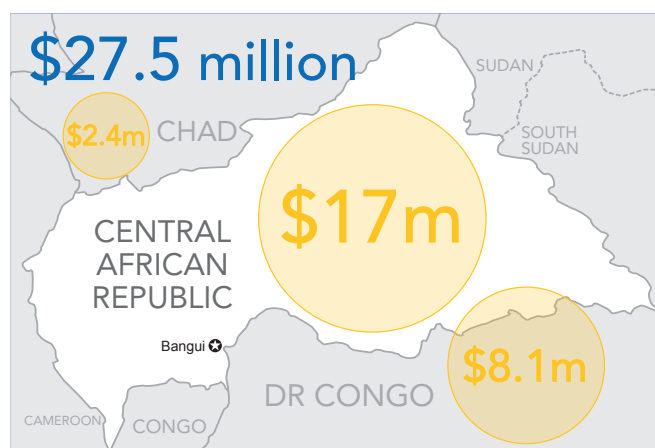


that 2 million people, almost half of the population, need assistance.

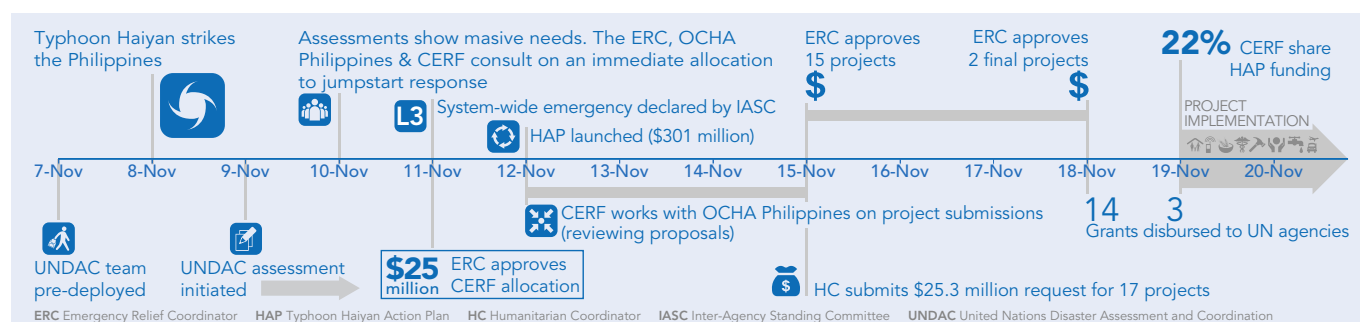
On 9 December, three days before a system-wide L3 emergency was declared, the ERC approved a \$9.8* million CERF allocation to support relief efforts in CAR. The funds were used to provide food, clean water, shelter, health care, and safety and security services.

This grant followed a previous allocation to CAR of \$7.1 million in May 2013. An additional \$8 million has been provided to neighbouring Democratic Republic of the Congo, which had received more than 50,000 refugees from CAR.

CERF regional response to CAR crisis (2013-2014, in \$US million)



TYPHOON HAIYAN CERF ALLOCATION TIMELINE



* Figure includes \$1 million allocated to CAR in Q1 2014.

Q4 UNDERFUNDED EMERGENCIES ALLOCATIONS

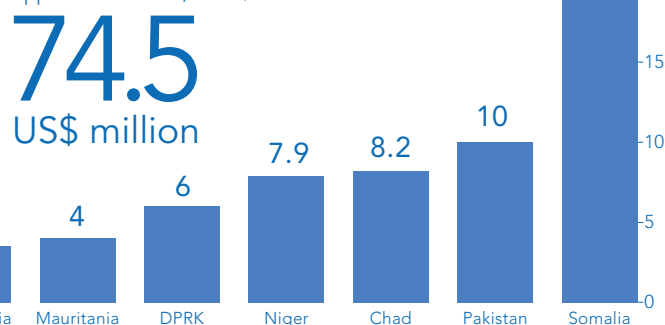
Twice a year, through CERF's underfunded emergencies facility, the ERC allocates funding to support humanitarian projects in countries where needs are high but financial support is low. The second tranche in 2013, allocated and disbursed in September and October, totalled \$74.5 million and was allocated to humanitarian partners in 13 countries (see graph below).

SOMALIA

Somalia is one of the largest and most complex crises in the world, but the country's humanitarian appeal, which supports over 1 million people, received 23 per cent less funding in 2013 compared to 2012. Recognizing this critical shortfall, the ERC allocated \$20 million for projects in Somalia.

To ensure that life-saving services could continue for vulnerable people in Somalia, the allocation supported relief work in poorly funded clusters of the broader humanitarian appeal, including food security, nutrition, health, logistics, protection and shelter.

2nd round 2013 underfunded emergencies allocations
Approved amounts, in US\$ million



Source: CERF (2014)

CERF SECRETARIAT UPDATES

PERFORMANCE AND ACCOUNTABILITY FRAMEWORK REVIEW (October)

In October 2013, the CERF-commissioned external review of the Performance and Accountability Framework (PAF) was completed. The review considered three years of experience with the PAF, focusing on its effectiveness in facilitating the management of the CERF secretariat, meeting donors' information needs, and synergy with other agencies' monitoring and evaluation systems.

The review's report concluded that the PAF had achieved its objectives and was an effective framework, recommending its ongoing use. The report also recommended that the PAF become more of a living tool, with information that is easier to capture and more flexible in managing indicators. The CERF secretariat is reviewing the report. It will update the PAF in the coming months and present a revised version to the CERF Advisory Group at its first meeting of 2014.

CERF ADVISORY GROUP (November)

The second Advisory Group meeting of 2013 took place in New York on 4 and 5 November. The group considered several key issues, including administration, fund allocation, partnerships and resource mobilization.

The group met with the UN Controller and requested further information on the use and traceability of CERF programme-support costs (indirect costs) once the UN's new central administrative system (Umoja) is in place.

Discussions were held with the Inter-Agency Standing Committee (IASC) on partnerships with non-governmental organizations. Group members recommended that the issue of fund disbursement to implementing partners be brought to the attention of IASC principals at their next meeting.

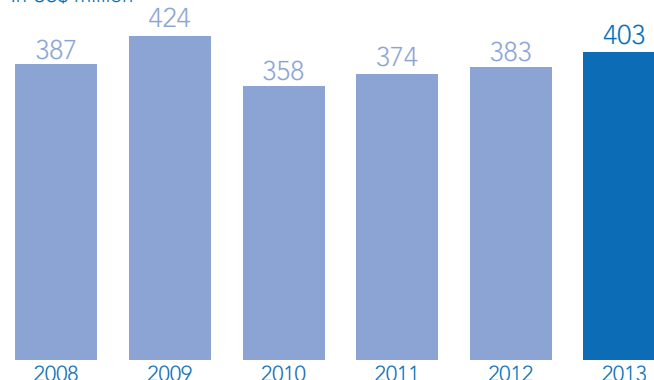
The group also discussed CERF's heavy reliance on a small group of donors and emphasized the need for more diverse resource mobilization. The CERF secretariat is addressing all of the suggestions and concerns raised by the group and will report on progress at the next meeting in May 2014.

HIGH-LEVEL CONFERENCE (December)

The CERF High-Level Conference was held on 13 December in New York. More than 40 Member States and observers, regional organizations, and private and individual donors attended. Together, these groups pledged \$404.6 million for 2014, including a pledge from first-time donor Mali.

After a short film about CERF-funded work in the field, the ERC joined the conference live from Lebanon for an interactive discussion with the Humanitarian Coordinator (HC) in Syria, Yacoub El Hillo, the HC in Jordan, Andrew Harper, and the conference attendees. For more information on the event visit www.unocha.org/cerf/about-us/events

Amounts pledged at CERF High-level conferences, 2008-2013
In US\$ million



Q4 SUMMARY TABLES

Approvals: 4th quarter 2013 (by approval date/emergency, in US\$)

Approval dates	Emergency / window		Amount
1-2 Oct*	Philippines (displacement)	UFE	1,000,089
1-7 Oct	Philippines (conflict/displacement)	RR	3,015,540
1-8 Oct*	Columbia	UFE	1,235,699
1-9 Oct	Syria (conflict)	RR	19,970,354
1-16 Oct*	Niger	UFE	5,694,377
1-18 Oct*	Sudan (flood)	RR	5,047,0979
1-25 Oct*	Chad	UFE	5,455,860
2 Oct*	Pakistan	UFE	447,795
2 Oct*	Mauritania	UFE	1,508,677
2-8 Oct*	Somalia	UFE	13,566,723
8-11 Oct*	Djibouti	UFE	2,094,307
9-10 Oct	Ethiopia (conflict/displacement)	RR	4,209,143
14 Oct	Guinea (flood)	RR	1,097,986
14 Oct	Guinea (conflict/displacement)	RR	1,141,170
23 Oct	Niger (flood)	RR	3,000,002
25-29 Oct	Bolivia (drought)	RR	2,464,176
31 Oct-13 Nov	Philippines (earthquake)	RR	4,997,324
4-5 Nov	Malawi (food insecurity)	RR	8,049,782
4 Nov	Kenya (food insecurity/locusts)	RR	1,506,314
5-12 Nov	Rwanda (expellees)	RR	2,392,374
15-18 Nov	Philippines (typhoon)	RR	25,284,204
3 Dec	Ethiopia (expellees)	RR	1,507,993
3 Dec	Zimbabwe (food insecurity)	RR	1,967,415
24 -31 Dec*	CAR (conflict)	RR	8,750,712
	Total		125,405,995

Approval dates refer to dates when the first and last projects within the allocation were approved by the Emergency Relief Coordinator. Allocations marked with an asterisk (*) have had projects approved before or after 1 October - 31 December 2013.

Contributions: 4th quarter 2013 (by country/pledge year, in US\$)

Date*	Donor	For year	Amount
Oct			
2	Mexico	2013	350,000
11	Andorra	2013	19,646
18	Republic of Korea	2013	2,900,000
Nov			
12	United Kingdom	2013	40,090,000
21	Baha'i International Community	2013	5,000
26	Sweden	2013	35,488,327
Dec			
3	Belgium	2013	14,219,100
9	Baha'i International Community	2013	5,000
10	Latvia	2013	41,027
11	Romania	2013	34,348
13	Bhutan	2012 / 2013	3,000
16	Sweden	2014	15,170,000
17	Mongolia	2013	10,000
17	United Kingdom	2013	32,568,000
18	Hungary	2014	48,047
18	Norway	2014	9,693,173
20	Czech Republic	2014	116,213
20	Guyana	2013	2,184
20	Ireland	2014	12,183,300
27	Belgian Government of Flanders	2014	410,100
27	Estonia	2014	135,580
27	Morocco	2013	5,000
	Total		163,497,045

* Refers to the to date the contribution was reflected on the United Nations Trust Fund account.

Total 2013 approved allocations (country/window, in US\$)

#	Country	Rapid response	Underfunded	Total
1	Sudan	30,525,358	16,922,090	47,447,448
2	Syria	40,403,809	-	40,403,809
3	Philippines	33,297,068	2,998,998	36,296,066
4	Ethiopia	6,972,905	17,000,030	23,972,935
5	Somalia	1,415,815	19,787,197	21,203,012
6	Yemen	2,000,492	16,800,822	18,801,314
7	Mali	17,883,983	-	17,883,983
8	Lebanon	17,531,518	-	17,531,518
9	CAR	15,883,792	-	15,883,792
10	Afghanistan	-	16,574,042	16,574,042
11	DPR Korea	2,102,708	12,996,679	15,099,387
12	Jordan	14,754,548	-	14,754,548
13	Niger	6,409,438	7,891,736	14,301,174
14	Pakistan	3,888,565	10,001,780	13,890,345
15	Chad	4,881,818	8,205,856	13,087,674
16	DRC	12,057,344	-	12,057,344
17	South Sudan	11,586,879	-	11,586,879
18	Iraq	9,999,143	-	9,999,143
19	Uganda	4,974,413	3,999,807	8,974,220
20	Mauritania	4,470,372	4,008,632	8,479,004
21	Malawi	8,049,782	-	8,049,782
22	Madagascar	5,000,000	3,003,483	8,003,483
23	Myanmar	4,999,616	2,999,832	7,999,448
24	Haiti	-	7,480,100	7,480,100
25	Burundi	3,479,171	2,970,162	6,449,333
26	Nigeria	6,431,433	-	6,431,433
27	Djibouti	-	6,307,018	6,307,018
28	Mozambique	5,842,338	-	5,842,338
29	Rwanda	5,544,797	-	5,544,797
30	oPt	4,533,266	-	4,533,266
31	Cameroon	4,073,612	-	4,188,872
32	Colombia	-	3,493,954	3,493,954
33	Guinea Bissau	3,166,825	-	3,166,825
34	Eritrea	-	3,055,305	3,055,305
35	Kenya	3,039,186	-	3,039,186
36	Senegal	3,038,387	-	3,038,387
37	Liberia	-	2,991,937	2,991,937
38	Algeria	-	2,984,040	2,984,040
39	Bolivia	2,464,176	-	2,464,176
40	Guinea	2,239,156	-	2,239,156
41	Bangladesh	-	2,000,642	2,000,642
42	Zimbabwe	1,967,415	-	1,967,415
43	Marshall Islands	1,000,000	-	1,000,000
44	Laos	753,504	-	753,504
45	Rep of Congo	751,772	-	751,772
	Total	307,529,664	174,474,142	482,003,806

The latest version of this document is available on <http://cerf.un.org>

For additional information, please contact CERF at cerf@un.org or visit CERF webpage at <http://cerf.un.org>

Produced by the CERF secretariat, United Nations Office for the Coordination of Humanitarian Affairs (OCHA) | 31 January 2014

2013 SUMMARY

For latest figures visit cerf.un.org

Member States and the private sector contributed \$474 million to CERF for 2013—the highest-ever annual total. An additional \$6.7 million was pledged and remains outstanding.

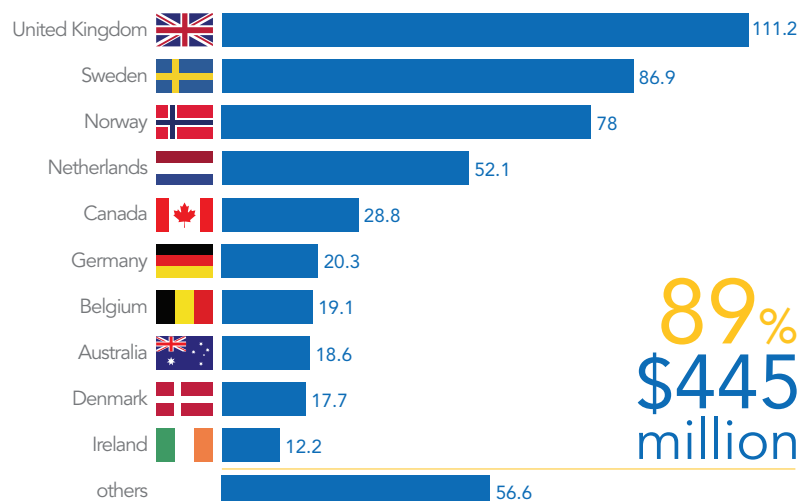
CERF received more than \$502 million in contributions during 2013, including payments for 2012 and early funding for 2014. See table on the right for more details.

In 2013, the Emergency Relief Coordinator (ERC) allocated a record \$482 million from CERF for life-saving humanitarian activities in 45 countries and territories. More than \$307 million of that amount was allocated for humanitarian activities in new or rapidly deteriorating crises through CERF's rapid response window and \$175 million was allocated to sustain aid operations in neglected crises through the Fund's underfunded emergencies window. The ERC also approved a \$27 million loan for the World Food Programme for Syria and neighbouring countries.

More than 81 per cent of CERF funding went to humanitarian partners responding to complex emergencies, and 19 per cent was allocated in response to natural disasters. In 2013, CERF was crucial in supporting coordinated humanitarian action and strengthened leadership in nearly every major emergency worldwide. A detailed overview of 2013 CERF allocations is available overleaf.

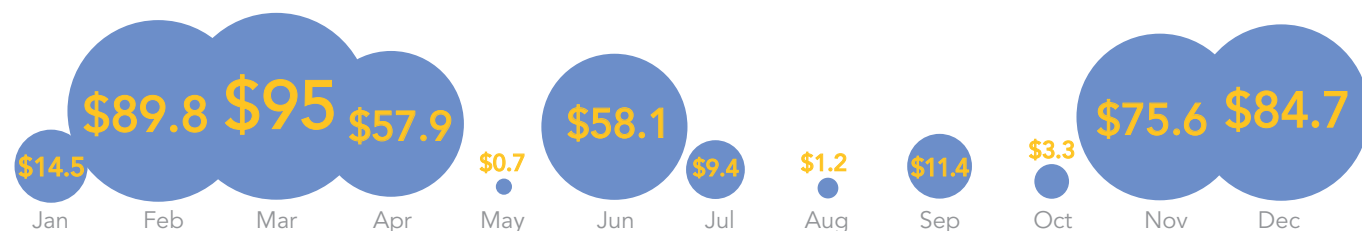
TOP 10 CONTRIBUTORS IN 2013

In US\$ million, received between 1 January and 31 December 2013



DISTRIBUTION OF CONTRIBUTIONS RECEIVED IN 2013

In US\$ million, received between 1 January and 31 December 2013



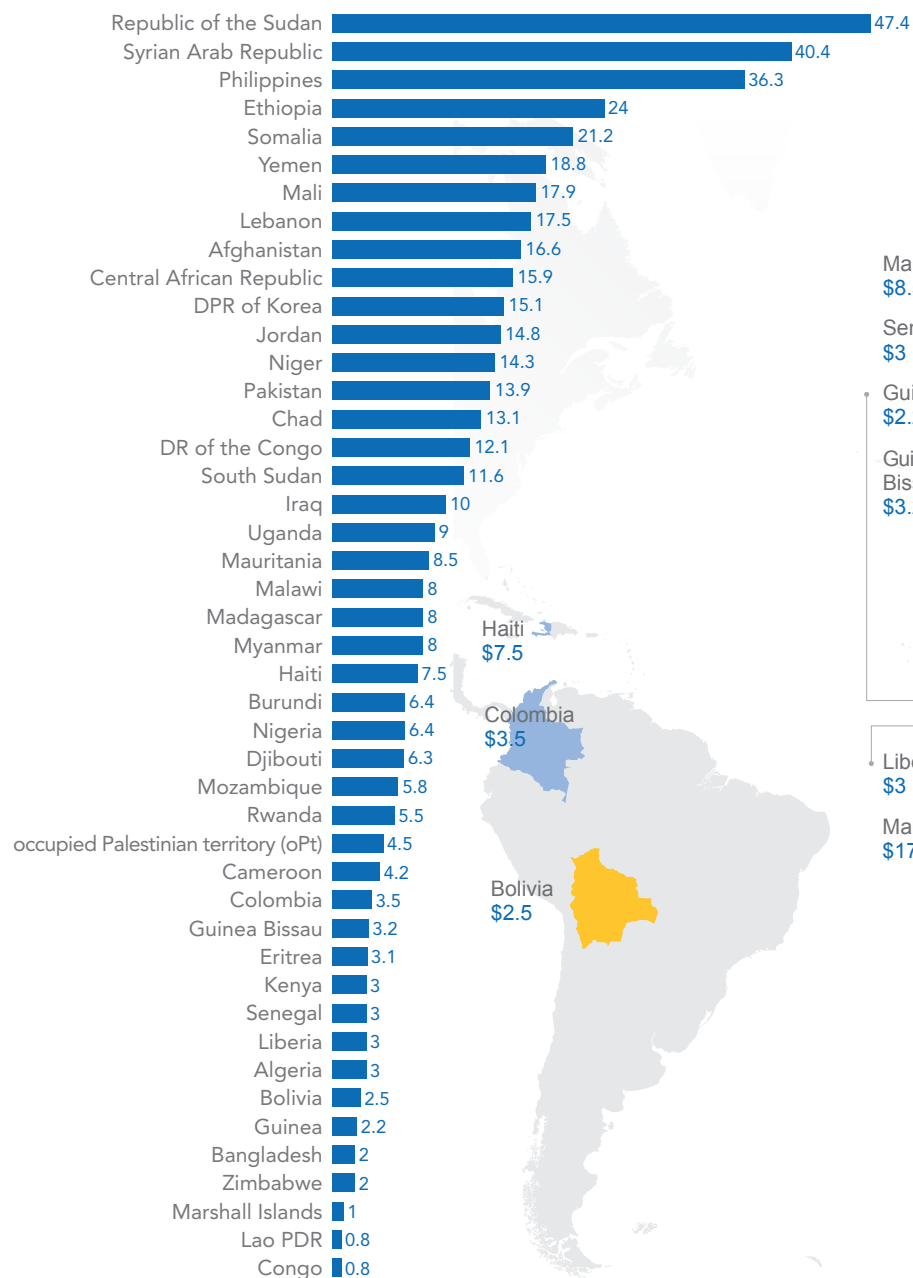
CONTRIBUTIONS RECEIVED IN 2013

In US\$, received between 1 January and 31 December 2013

DONOR	for 2012	for 2013	for 2014
UN Member States	10,624,610	452,419,819	37,589,954
Andorra		19,646	
Argentina	6,744	70,000	
Armenia		5,000	
Australia		18,566,600	
Austria		271,600	
Azerbaijan		39,820	
Belgium	4,915,875	14,219,100	
Bhutan	1,500	1,500	
Brazil		1,000,000	
Canada		28,809,407	
Chile		30,000	
China		500,000	
Colombia		100,000	
Czech Republic			116,213
Denmark		17,667,064	
Estonia			135,580
Finland		9,111,900	
France		393,300	
Germany		20,313,000	
Greece		50,000	
Guyana		2,184	
Hungary		20,098	48,047
Iceland	50,000	130,000	
India		500,000	
Indonesia		200,000	
Ireland			12,183,300
Italy		653,350	
Japan		2,987,013	
Korea, Republic of		2,900,000	
Kuwait		500,000	
Latvia		41,027	
Liechtenstein		272,242	
Luxembourg		5,747,126	
Mexico		350,000	
Monaco		64,990	
Mongolia		10,000	
Montenegro		3,000	
Morocco		5,000	
Mozambique		2,000	
Myanmar	10,000		
Netherlands		52,124,000	
New Zealand		1,670,425	
Norway		68,265,453	9,693,173
Peru		25,000	
Poland		248,162	
Qatar	3,000,000	1,500,000	
Romania		34,348	
Russian Federation		1,000,000	
San Marino	27,291		
Saudi Arabia		450,000	
Serbia		7,000	
Singapore		50,000	
South Africa		274,469	243,641
Spain	2,608,200	6,617,500	
Sri Lanka		10,000	
Sweden		71,687,729	15,170,000
Switzerland		7,549,267	
Turkey		50,000	
United Arab Emirates		70,000	
United Kingdom		111,230,500	
United States		4,000,000	
Uruguay	5,000		
Observers		5,000	
SMO of Malta		5,000	
Regional Authorities		401,430	410,100
Government of Flanders		401,430	410,100
Private contributions		10,881	
Baha'i International C.		10,000	
Private donations		881	
Grand Total	10,624,610	452,832,131	38,000,054

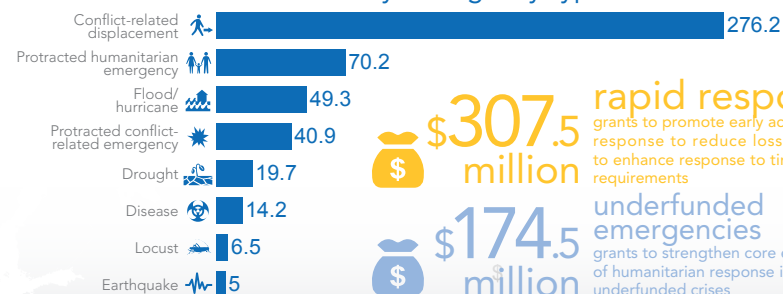
CERF CENTRAL EMERGENCY RESPONSE FUND 2013 ALLOCATIONS

Total 2013 CERF allocations by country (in US\$ million)



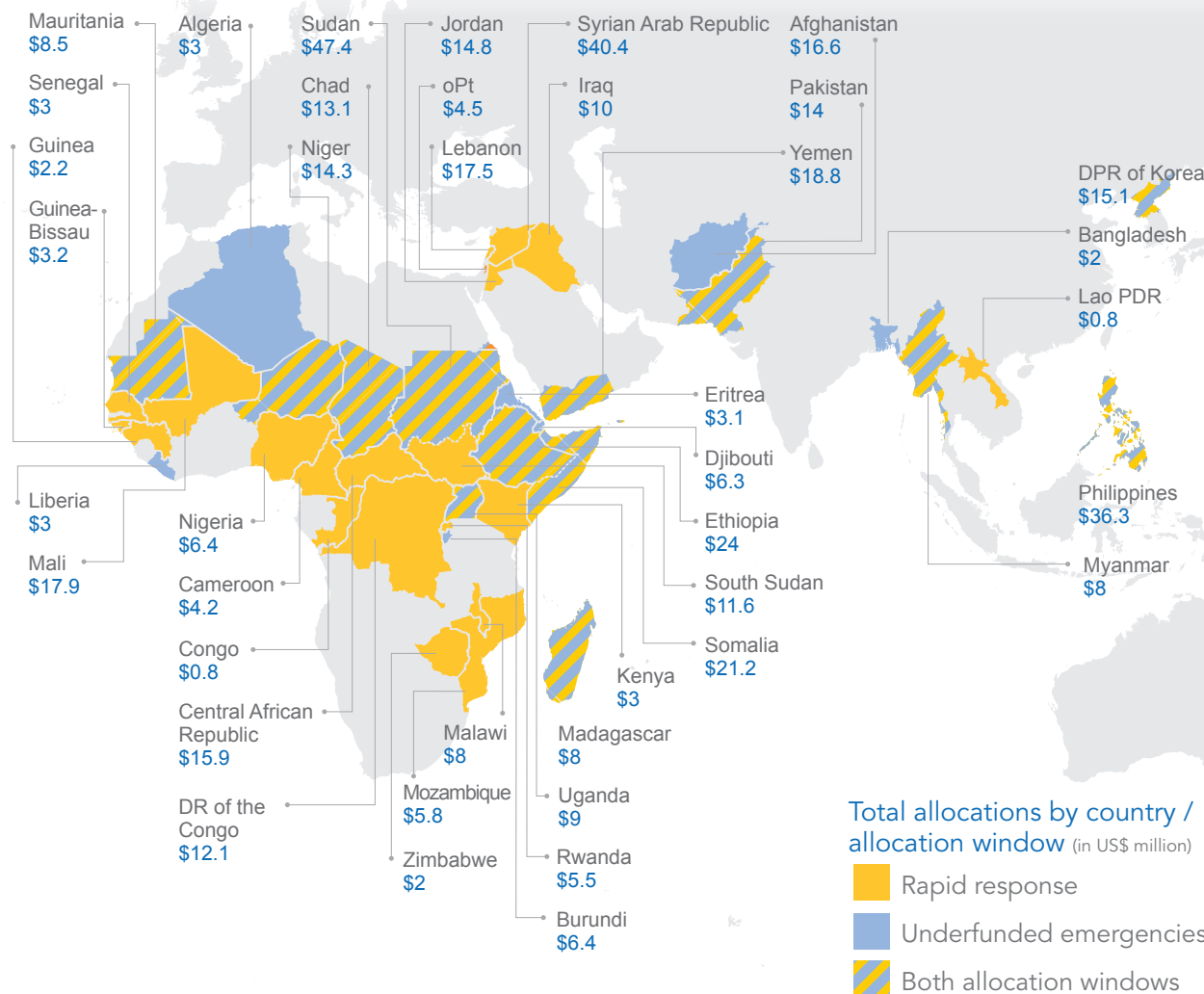
\$482 million

2013 CERF allocations by emergency type (in US\$ million)



\$307.5 million rapid response grants to promote early action and response to reduce loss of life, and to enhance response to time-critical requirements

\$174.5 million underfunded emergencies grants to strengthen core elements of humanitarian response in underfunded crises



Total allocations by country / allocation window (in US\$ million)

